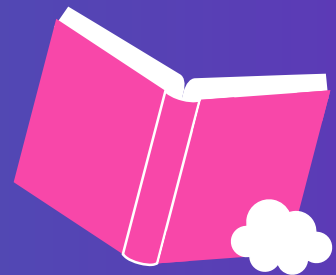


YEAR 8



OPTIONS 2023



Dear Year 8 students,

This is an exciting next step in your education: choosing some GCSE option subjects to study alongside the core subjects that you will study during Years 9 – 11.

Remember that you have up to three option choices and one of these option choices must be History or Geography. (You can take both if you wish to do so).

Please read this booklet carefully with your parents/carers and listen carefully to the presentations from our Option Subject Leaders. It is really important that you choose subjects that you think you will be happy and successful studying. Then come along to our Options Evening on Thursday 16th February for more advice and guidance which will help you to make the right choices.

Dear Parents/Carers,

Over the next few weeks, Year 8 students will be deciding which subjects to study during Years 9 - 11. Some subjects are compulsory (core subjects); others are optional. Please read through this booklet with your son/daughter and come along to the **Year 8 Curriculum and Options Evening on Thursday 16th February 2023**.

The Year 8 Curriculum and Options Evening will enable you to hear about the Options process in more detail and ask questions, both to Subject Leaders and to senior members of staff, who can offer you their advice. Our SENCO, Mrs Greenfield, will also be attending the event. The evening will run from 6.00pm until 8.00pm with a **subject fair in the Sports Hall**.

Information sessions about the Options process take place in Coombe Hall at **6.00pm** and **7.00pm**. Please choose the session most convenient to your arrival time. If you are travelling to the event by car, please kindly park on the school playground.

If you have any questions about your son's/daughter's curriculum package, or any other aspect of the Key Stage 4 Curriculum, please raise these at the Options Evening on 16th February or contact your son/daughter's form tutor, or Mrs Lynch, Year 8 Progress Leader or Mrs Robinson, Acting Deputy Headteacher.

Key Dates

Thursday 19th January: Introduction to the Options Process

Monday 23rd January – Friday 3rd February: Assemblies from Options Subject Leaders

Thursday 2nd February: Job Taster Day

January – March: Personal Development lessons: careers and work

Thursday 16th February 6 – 8pm: Curriculum and Options Evening

W/B Monday 6th March: taster lessons in Drama, Health and Social Care, Business Studies and Sociology

Monday 13th March: Deadline for Options forms to be completed

GCSE ENGLISH LANGUAGE and GCSE ENGLISH LITERATURE

Core

What Will You Do?

During these courses you will develop your ability to:

- read a range of plays, poetry and novels;
- read and study a range of non-fiction texts such as newspapers and websites;
- respond to texts with analysis and interpretation;
- write personally and creatively using descriptive and narrative writing;
- write non-fiction texts, such as letters, reviews, reports and articles;
- communicate information and argue a point of view clearly, in speech and writing;
- continue to develop your literacy skills;
- continue to develop your speaking and listening skills.

How Will You Do It?

- You will take part in a variety of reading, writing, speaking and listening activities.
- You will work on your own, in pairs, and in small or large groups.
- To support your learning, visiting theatre companies will also help you prepare for the examinations by performing key plays. We will also organise various theatre trips to any plays being performed locally which you are being examined on.

What Qualifications Can You Obtain?

Separate GCSEs are awarded for English Language and English Literature at grades 9-1. There is a single tier of entry for both subjects. At Higham Lane students follow the 'Eduqas' GCSE English Language and GCSE English Literature specifications.

How Will Your Work Be Assessed?

GCSE English Language

Component 1: 20th Century Literature: Reading and Creative Prose Writing Written examination : 1 hour 45 minutes. 40% of qualification.

Component 2: 19th and 21st Century Non-Fiction Reading and Transactional/Persuasive Writing Written examination: 2 hours . 60% of qualification.

Component 3: Spoken Language. One presentation/speech, including responses to questions and feedback. Non-exam assessment. (Achievement in Spoken Language will be reported as part of the qualification, but will not form part of the final grade).

GCSE English Literature

Component 1: Shakespeare: 'Macbeth' and Poetry from an Anthology Written examination: 2 hours . 40% of qualification.

Component 2: Post 1914 Prose and Drama: 'An Inspector Calls' by J.B Priestley, 19th Century Prose: 'A Christmas Carol' by Charles Dickens and Unseen Poetry Written examination: 2 hours and 30 minutes. 60% of qualification.

Learners are not permitted to take copies of the set texts or the Anthology into the examination.

For further information, please contact your English Teacher or Mrs Somel, Subject Leader for English.

GCSE MATHEMATICS

Core

What Will You Do?

You will build on mathematical concepts taught during Key Stage 3 Mathematics.

These will include: the learning and practice of basic skills in Number, Algebra, Geometry, Ratio and Proportion and Statistics.

You will also develop:

Problem-solving skills, to use and apply your mathematical knowledge to new situations; Functional skills, to be able to apply your knowledge to real life situations.

During the course, through teachers, students and parents/carers working together, it is hoped that you will:

- Achieve the highest grade you can at GCSE;
- Develop a positive attitude towards mathematics;
- Become aware of how mathematics relates to many different aspects of everyday life, industry, business and other areas of the curriculum;
- Make appropriate use of ICT;
- Develop a feel for number and be able to carry out necessary calculations, with and without a calculator, with confidence;
- Develop an understanding of mathematics, through enquiry and problem-solving.

Functional Mathematics will also be covered within the delivery of GCSE Mathematics.

How Will You Do It?

You will be placed in a group, with people of a similar ability. Moves between groups will take place as the need arises.

Learning situations will include:

- Instruction in and practice of, working on various topic areas, with and without calculators;
- Working on problem-solving, mathematical communication and developing strategies for using and applying mathematics in different situations;
- Taking tests on various topics. These will demonstrate your attainment level in these areas, and help to show what you need to work on in order to make progress and achieve your full potential.

All students will be entered for GCSE Mathematics. Students must have a Scientific Calculator for all lessons as two out of the three papers require the use of a calculator.

Fast or Dual Maths

Some of our most-able mathematicians will be selected for Fast or Dual Maths at the end of Year 9. During Year 9, they will study GCSE Mathematics and then based on their performance throughout Year 9, 30 students will be selected for Fast Maths and 30 students will be selected for Dual Maths.

Fast Maths: One group of students will be given the opportunity to study 3 qualifications during Year 10 and 11. These students will follow GCSE Mathematics during Year 10 and then during Year 11 they will study GCSE Statistics and a Free-Standing Mathematics Qualification called Level 2 Further Mathematics, which is excellent preparation for further studies at A-Level. Students may be entered for either GCSE Mathematics or GCSE Statistics in Year 10 but this decision will be finalised and shared in Year 9.

Dual Maths: Another group of students will study GCSE Mathematics and GCSE Statistics concurrently during Year 10 and 11.

What Qualifications Can You Obtain?

The GCSE Mathematics course is structured to allow you to work at a level with which you can cope, and allow you to demonstrate your ability in all areas of mathematics. There are two tiers of entry available: Foundation Tier Grades 5 4 3 2 1
Higher Tier Grades 9 8 7 6 5 4

Final tiering decisions are not made until Year 11, and you will be entered in a tier appropriate to your individual ability.

How Will Your Work Be Assessed?

Examinations (three papers—1 hour 30 minutes each) 100% of qualification (Two calculator papers and one non-calculator paper)

For further information, please contact your Maths Teacher or Miss Charnell, Subject Leader for Mathematics.

RELIGION AND WORLD VIEWS

Core

All students at Higham Lane School have the opportunity to take Religion and World Views.

What Will You Do?

You will be studying Religion and World Views, which encourages you to think about the connection between religion and the important issues people face in life. The first half of the course will involve an in-depth study of two religions, their beliefs, traditions and practices. The two religions that will be studied are Christianity and Islam. The second half of the course involves applying this knowledge to the study of ethical issues facing people today such as medical ethics, crime and punishment and war and peace.

To enhance your learning and to stimulate discussions, you will have the opportunity to draw on a range of resources, from religious artefacts, music, film, literature, art and ICT.

You do not have to be religious to study this course. You simply need to be interested in discussing topical issues, in finding out what other people think, as well as reflecting and explaining your own reasoned opinion on important life issues.

This course provides you with the opportunity to develop your knowledge and understanding of religion by exploring the impact of beliefs, values and judgements on decisions that challenge religious believers and non-believers.

The skills you will gain from this course are considered vital in a number of careers, which involve working with the public (for example, law, politics, teaching, management, banking, tourism); the caring professions, (medicine, childcare, social work, nursing) and professions which require an insight into social issues (journalism and publishing).

How Will You Do It?

This course will develop your critical thinking and debating skills. You will be encouraged to engage in discussions on challenging moral issues, to develop your own views and to consider alternative viewpoints on the important questions of life. You will be expected to develop your understanding of others and to question and clarify your own views on a number of ethical issues.

What Qualifications Can You Obtain?

All students will have the opportunity to obtain a GCSE full course qualification at grades 9-1. There is a single tier of entry for this subject.

How Will Your Work Be Assessed?

At the end of the course, you will be assessed by two examinations on the topics you have studied. As this course is 100% examined, there are no controlled assessments for this subject.

For further information, please contact your Religion and World Views Teacher or Mr Froggett, Subject Leader for Social Sciences and Religion and World Views.

PHYSICAL EDUCATION

Core

All students have to follow Physical Education (PE) at Key Stage 4, which is currently a non-examination course.

What Will You Do And How Will You Do It?

You will have 4 lessons of PE per fortnight. We aim to ensure that you fulfil your potential and as such we aim to provide you with a varied programme of activities which aim to suit different interests and needs. Each half term you will have the opportunity to participate in a different activity. In some of these you will gain further experience in activities you have participated in during Key Stage 3, such as badminton, football, netball and dance. There will also be new activities you have not experienced in Key Stage 3, such as judo and squash.

The main aims of Core PE in Key Stage 4 are:

- To develop an advanced level of skill, knowledge, tactical/compositional awareness and fitness.
- To take on different roles within lessons, for example coach, choreographer and official and to extend leadership skills.
- To extend analysis and evaluation skills, so that students can improve their own and others' performance.
- To learn the importance of participation in physical activity for health and to identify activities which students enjoy participating in, in order to promote lifelong participation in physical activity.

Some of the activities on offer in Key Stage 4 take place off the school site and some are taken by qualified coaches/instructors. Because of this, there will be a small charge should your son/daughter opt for these.

What Qualifications Can You Obtain?

Core PE does not lead to a GCSE qualification.

A wide range of activities is offered at school clubs and there are several Key Stage 4 sports teams. Students are encouraged to participate and represent the School wherever possible.

For further information, please contact your PE Teacher or Miss Chinn, Subject Leader for PE or Mr Wilson, Assistant Subject Leader for PE.

GCSE COMBINED SCIENCE

GCSE SINGLE SCIENCE

Core

What Will You Do?

Students will begin studying GCSE Science from the start of Year 9 with all students following the same programme of study.

Decisions will be made at the end of Year 9 based on GCSE assessments as to whether students follow:

- i) GCSE Combined Science: Students study for two GCSEs that cover aspects of Biology, Chemistry and Physics.
- ii) GCSE Single Science: Students will study for three separate GCSEs in Biology, Chemistry and Physics.

Both routes enable students to obtain GCSEs at grades 9-1.

GCSE Combined Science Students will study the aspects of Biology, Chemistry and Physics listed below. Students will receive nine one-hour lessons a fortnight in Years 9, 10 and 11; three lessons each of Biology, Chemistry and Physics.

How Will Your Work Be Assessed?

Students will sit tiered exam papers at the end of their course in Year 11 and will be awarded two GCSE grades. All assessments will be through written examinations.

What Will You Do?

Biology

- Cell biology
- Transport systems
- Health, disease and the development of medicines
- Co-ordination and control
- Photosynthesis
- Ecosystems
- Inheritance, variation and evolution

Chemistry

- Atomic structure and the periodic table
- Structure, bonding and the properties of matter
- Chemical changes and calculations
- Energy changes in chemistry
- The rate and extent of chemical change
- Crude oil and fuels
- Earth's resources and atmospheric science

Physics

- Energy
- Forces
- Forces and motion
- Waves in matter
- Light and electromagnetic waves
- Electricity
- Magnetism and electromagnetism
- Particle model of matter
- Atomic structure

GCSE Single Science (GCSE Biology, GCSE Chemistry and GCSE Physics)

The most able students will be offered the opportunity to study three separate GCSEs in Biology, Chemistry and Physics. Students will receive nine one-hour lessons a fortnight in Years 9, 10 and 11; three lessons each of Biology, Chemistry and Physics.

How Will Your Work Be Assessed?

Students will sit tiered exam papers at the end of their course in Year 11 and will be awarded three separate GCSEs. All assessments will be undertaken through written examinations.

How Will The Course Differ From GCSE Combined Science?

Along with the content covered in the GCSE Combined Science course, students who study the Single Science GCSE will cover additional content in the following areas:

Biology

- The genome and gene expression
- **Chemistry**
- Organic chemistry and chemical analysis
- **Physics**
- Space physics

For further information, please contact your Science Teacher or Mrs Huxley, Subject Leader for Science.

GCSE French

Core

Communicating with other people, finding out how languages work and learning about different countries and cultures are some of the skills you will gain when you study GCSE French. You will be adding an international dimension to your GCSE qualifications, which is something many universities and future employers look for.

What Will You Do?

- You will be able to talk about yourself, and share your interests, ideas and opinions with others in French.
- You will learn more about the culture of the countries where French is spoken.
- You will learn many skills which are useful in a wide range of future careers, such as the ability to communicate clearly, being confident about speaking in public and using problem solving techniques.
- You will build on key topics covered in Key Stage 3 and move on to new topics.
- You will continue to develop your listening and speaking skills.
- You will continue to develop your reading and writing skills.
- You will continue to develop your literacy skills.
- You will continue to develop your subject knowledge and increase your fluency in French.

How Will You Do It?

You will take part in a variety of listening, speaking, reading and writing activities

You will work on your own, in pairs and in small groups

You may have the opportunity to go to France to use your skills in real-life context

What Qualifications Can You Obtain?

Students are entered for either Foundation or Higher tier for all skills with GCSE grades 9 to 4 available on the Higher tier and grades 5 to 1 available on the Foundation tier.

How Will Your Work Be Assessed?

You will be assessed in :

- Listening
- Speaking
- Reading
- Writing

For further information, please contact your French Teacher, Mrs Finley, Subject Leader for Modern Foreign Languages or Miss Hampton, Assistant Subject Leader for Modern Foreign Languages.

GCSE GEOGRAPHY

EBacc option

We have an exciting fast-paced curriculum that builds students' knowledge, confidence and skills in Geography through the learning of place, space, scale, location and interconnections. You will be able to understand more about the world, the challenges it faces and your place within it.

What Will You Do?

You will follow the AQA exam board. You will study three components as part of GCSE Geography – Issues in the Natural Environment, Issues in the Human Environment and Issue Evaluation. The whole course is based around geographical enquiry, encouraging an investigative approach. You are encouraged to make geographical decisions about real-life, 21st Century people and environment issues. Component 1 includes Natural Hazards, The Living World and Physical Landscapes of the UK; Rivers and Coasts. Component 2 will involve the study of Urban Issues, Resource Management and the Changing Economic World. Component 3 is decision-based work around a pre-release booklet, which is released in March before the exam. This component also looks at human and physical fieldwork.

How Will You Do It?

Whole class teaching, group work, paired work and independent tasks, which will help you to develop your geographical understanding. You will also develop a range of integrated geographical skills, including some mathematical and statistical skills from graphs, mapping, grid references and scale. Fieldwork is also an important aspect of the GCSE, with every student expected to take part in at least 2 days of field trips, in both the physical and human environment. This experience will be tested as a section of Component 3 at the end of Year 11.

What Qualifications Can You Obtain?

There is a single tier of entry for this course which leads to a GCSE in Geography at grades 9-1.

How Will Your Work Be Assessed?

100% written examination, broken down into the following components:

- · Paper 1- The Physical Environment: 35%
- · Paper 2- The Human Environment: 35%
- · Paper 3- Issues Evaluation and Fieldwork: 30%

For further information, please contact your Geography Teacher or Mr Turley, Subject Leader for Geography.

GCSE HISTORY

EBacc option

GCSE History will help you learn more about the history of Britain and of the wider world. It will help deepen your understanding of the people, periods and events studied and allow you to think critically, weigh up evidence and make informed decisions.

What Will You Do?

You will study history from three eras: Medieval (500-1750), Early Modern (1450-1750) and Modern (1700 to present day). In studying these different time periods in history, you will look at social, economic, political, religious, technological and military factors, as well as studying history on a local, British and European level.

Unit One– Crime and Punishment through Time, c1000-present (30%). In this unit, you will learn about how crime and punishment have developed, including the origins of the Police and forensics, as well as the changing attitudes towards crime within society.

Unit Two– Early Elizabethan England 1558-1588 and the Cold War (40%). In this unit, you will study England in the medieval time period and the relations between America and the USSR during the Cold War and their place in the world, as seen both domestically and internationally, and understand how both countries emerged as key powers.

Unit Three– Weimar and Nazi Germany 1918-1939 (30%). In this unit, you will learn about Germany during the period between World War 1 and World War 2, to try to understand how Hitler came to power and how this resulted in the Second World War.

What Qualifications Can You Obtain?

There is a single tier of entry for this course which leads to a GCSE in History at grades 9-1.

How Will Your Work Be Assessed?

Examinations (3 papers) - 100% of qualification

For further information, please contact your History Teacher or Mrs Doyne-Ditmas, Subject Leader for History.

GCSE BUSINESS

Option

Business is an exciting and fast-moving subject which looks at the way businesses start and operate to satisfy customers and make profits for investors. It will give you an appreciation of the dynamic environment in which businesses operate and the factors which have an impact. The course will provide you with the knowledge, understanding and skills necessary to prepare you for employment or higher education. It blends easily with other subjects and opens up a wide range of careers.

What Will You Do?

You will study two themes. Theme 1 concentrates on the key business concepts, issues and skills involved in starting and running a small business. You will explore core concepts through the lens of an entrepreneur setting up a business. You will be introduced to local and national business contexts and will develop an understanding of how these contexts impact business behaviour and decisions. Local contexts refer specifically to small businesses or those operating in a single UK location and national contexts relate to businesses operating in more than one location or across the UK. You will develop an understanding of the interdependent nature of business activity through interactions between business operations, finance, marketing and human resources, as well as the relationship between the business and the environment in which it operates. You will gain an understanding of how these interdependencies and relationships underpin business decisions.

Theme 2 examines how a business develops beyond the start-up phase. It focuses on the key business concepts, issues and decisions used to grow a business, with emphasis on aspects of marketing, operations, finance and human resources. Theme 2 also considers the impact of the wider world on the decisions a business makes as it grows. You will be introduced to national and global business contexts and will develop an understanding of how these contexts impact business behaviour and decisions. National contexts build on those in Theme 1 and relate to businesses operating in more than one location or across the UK. Global contexts relate to non-UK or transnational businesses. You will develop an understanding of the interdependent nature of business activity through interactions between business operations, finance, marketing and human resources, as well as the relationship between the business and the environment in which it operates. You will gain an understanding of how these functional areas influence business activity and how interdependencies and relationships between them underpin business decisions.

What Qualifications Can You Obtain?

At the end of the course, you will achieve a GCSE in Business. There is a single tier of entry in Business, so you can achieve every grade from 9 – 1.

How Will Your Work Be Assessed?

You will have two written examinations at the end of the course. Theme 1 and Theme 2 examinations are both 1 hour and 30 minutes in length and each is worth 50% of the qualification.

Please note that if you choose GCSE Business or vocational Business as an option, we will advise you as to the most appropriate qualification (GCSE or vocational) for you.

For further information, please contact Mrs McKernan, Subject Leader for Business.

NCFE TECHNICAL AWARD IN BUSINESS AND ENTERPRISE (VOCATIONAL)

Option

This qualification is designed for learners who want an introduction to business and enterprise that includes a vocational and hands-on element. It has been developed to enthuse and inspire learners about a career in business and enterprise.

The qualification will appeal to learners who wish to set up their own business, move into employment, or progress onto further study.

This qualification aims to develop a broad and comprehensive understanding of business and enterprise and provide academic and study skills that will support progression within business and enterprise more broadly.

What Will You Do?

The content of the course relates directly to the skills, knowledge and behaviours expected by employers in this sector. You will study two units. Unit 1 is an externally assessed unit and Unit 2 is internally assessed. Throughout the delivery of this qualification, the following transferable skills should be evident:

- team working – the qualification requires you to work with others
- communication skills
- presentation skills – you will learn to present your work to those around you
- initiative – you will learn what initiative is and why it is important in business
- working independently on specific tasks.

Throughout the delivery of this qualification, the following core areas will be covered in the two units:

- entrepreneurial characteristics and business aims and objectives
- legal structures, organisational structures and stakeholder engagement
- the marketing mix, market research, market and orientation types
- operations management internal and external influences on business
- resource planning and growth for business
- human resource requirements for a business start-up
- sources of enterprise funding and business finance
- business and enterprise planning
- enterprise tools

The qualification focuses on an applied study of the business and enterprise sector and you will gain a broad understanding and knowledge of working in the sector.

What Qualifications Can You Obtain?

At the end of the course you will achieve a Business and Enterprise vocational qualification that is equivalent to one GCSE. This will be either at Pass, Merit, Distinction or Distinction*. There is a single tier of entry in business so you can achieve every grade from Pass to Distinction*

How Will Your Work Be Assessed?

The course has internally assessed components that make up a portfolio of evidence covering all learning outcomes. The internally assessed components are set by the awarding body and are broken down into assignments and smaller tasks for you to complete. This accounts for 60% of the qualification. The external component is a 1 1/2 hour exam set by the awarding body assessing application of knowledge and skills and accounts for 40% of the qualification.

Please note that if you choose GCSE Business or vocational Business as an option, we will advise you as to the most appropriate qualification (GCSE or vocational) for you.

For further information, please contact Mrs McKernan, Subject Leader for Business.

GCSE COMPUTER SCIENCE

Option

What Will You Do?

GCSE Computer Science is engaging and practical, encouraging creativity and problem solving to help you prepare for an ever changing and evolving world. You will explore the different aspects that make up a digital system, how they store data and communicate with each other. This use of technology makes a massive impact on wider society, and this is explored through the positive and negative effects.

It also encourages you to analyse problems using the fundamental principles and concepts of Computer Science to apply your creativity and develop your own algorithms and software programs using python programming language.

Computer Science is a hard subject to grasp but can be fun and rewarding; getting to understand the foundations of technologies and emerging technologies. You will love this aspect of the course as you realise you are preparing for jobs that do not exist yet!

How Will You Do It?

During this course you will study 2 units; Unit 1 - Computer Systems and Unit 2 - Computational Thinking and Programming.

For Unit 1 you will learn about current and emerging digital technologies and ethical issues such as the impact of technology on the environment. Topics include: - 1.1 Systems architecture; 1.2 Memory and storage; 1.3 Computer networks, connections and protocols; 1.4 Network security; 1.5 Systems software and 1.6 Ethical, legal, cultural and environmental impacts of digital technology

For Unit 2 you will investigate algorithms. You will learn how to write, correct, explain and evaluate them. You will also learn what Boolean logic is, learn about data types, representation of data, data structures, security, programming languages, programming and abstraction. Topics include: - 2.1 Algorithms; 2.2 Programming fundamentals; 2.3 Producing robust programmes; 2.4 Boolean logic and 2.5 Programming languages and Integrated Development Environments.

What Qualifications Can You Obtain?

The course will lead to a GCSE in Computer Science at grades 9 -1. There is a single tier of entry for this subject.

How Will You Be Assessed?

The course is exam based and will be assessed by 2 exams at the end of year 11

Unit 1: Computer Systems

- Written examination: 1hr 30 mins (50%)

Unit 2: Computational Thinking, Algorithms and Programming

- Written examination: 1hr 30 mins (50%)

What sort of Careers is it suited for?

Computers and problem solving are common place in the wider world and Computer Science is ideal to prepare you for this new world. Some typical careers relating directly to Computer Science include:

Network Architect, Computer Programmer, Computer Games Developer, Computer Analyst, Robots and Artificial Intelligence

For further information, please contact your Computer Science Teacher or Mr Anstey, Subject Leader for Computer Science and ICT, or Mrs Hiett-Jones Assistant Subject Leader for Computer Science and ICT.

GCSE DRAMA

Option

What Will You Do?

Drama is an engaging and practical GCSE, where you will develop your ability to:

- Act and perform to an audience
- Be creative
- Use your imagination
- Have confidence in public speaking
- Work as part of a group
- Analyse, evaluate and appreciate dramatic performances
- Study play texts
- Understand different types of performance
- Develop understanding of physicality, voice and characterisation

Drama is a vital GCSE for those who wish to continue studying the Performance Arts. It has also become increasingly important to top universities and employers, many of whom look for exactly the type of skills you will learn in Drama: effective public speaking, the ability to work successfully as part of a team and independently and creative thinking, to name but a few.

How Will You Do It?

Over three years, you will work individually, within a small group, or as a whole class, looking at different aspects of Drama and performance.

You will study play texts, practitioners and different styles of dramatic performance. The majority of your Drama lessons will be practical and involve working creatively with others. There will be a written element of each unit involving a working record of your explorations.

What Qualifications Can You Obtain?

Successful completion of this course will lead to a GCSE in Drama at grades 9-1. There is a single tier of entry for this subject.

How Will Your Work Be Assessed?

You will be assessed through two practical components and a written exam:

Component One: Devising Drama (Performance and written coursework). You will research and explore a stimulus, work collaboratively and create your own devised drama. You will write about the exploration process and evaluate the final performance. 30%

Component Two: Presenting and Performing Texts. You will develop and apply theatrical skills in acting or design by presenting a showcase of two extracts from a performance text. 30%

Component Three: Drama: Performance and Response (Written exam). You will explore practically a performance text to demonstrate your knowledge and understanding of drama. You will evaluate a live theatre performance. 40%

Remember: Drama is fun, but it is also hard work. You must be focussed, committed, enjoy working with others and willing to take a risk. If you are, then Drama is the right choice for you.

For more information, please contact Mrs Styring, Subject Leader for Drama or Mr Bottrill.

CAMBRIDGE NATIONALS LEVEL 2 IN ENGINEERING DESIGN (VOCATIONAL)

Option

Love Maths & Physics? Enjoy taking things apart and working out how they work? Have a talent for problem-solving? Great at drawing and communication? Then this course is for you! This course builds on knowledge, skills and understanding learned during Years 7 and 8 in Design and Technology lessons.

What Will You Do?

This is a design, problem-solving and manufacture based course. During the three years, you will learn about how engineers test and use materials, work with CAD/CAM, apply Maths, Science and Design to solve engineering problems, calculate material properties and cost and research into the suitability of how different materials are used to solve problems.

In Year 9 you will investigate structures, prototype a range of mini products, test and evaluate them and understand how design development is key to the manufacture of high quality parts or products. You will learn a wide range of processes that are used across the engineering world, such as manufacturing using multiple materials, testing surface finishes, electronics, producing high quality Isometric and 3rd Angle Orthographic technical drawings as well as Computer Aided Design and Manufacture.

In Years 10 and 11 you will research and disassemble a range of products and investigate how and why they function. You will conduct a range of tests and evaluate the outcomes. You will analyse materials, parts and processes and draw conclusions about their fitness for purpose. You will investigate and evaluate a range of clients and design products to suit their diverse needs. You will sketch, develop, design, model and prototype a high quality marketable product suitable for volume production. This will be showcased as part of the Higham Lane School Design and Food Engineering Show at the end of Year 11.

By doing this you will gain an understanding of how technology and engineering impact on society and the environment. You will also gain an understanding of different materials (for example aluminium, mild steel, copper, hardwood, softwood, manufactured board and polymers) and will experience processes such as cutting, filing and finishing materials, CAD/CAM, construction, jointing methods, milling, using the centre lathe, during the manufacture of prototypes and products.

To enhance your learning experience, we will visit the Big Bang STEM fair at the NEC, as well as making use of links with local engineering firms, such as Mira and Triumph in Hinckley.

How Will You Do It?

You will be taught in mixed ability classes and will have access to the wide range of resources available across the Department. The emphasis is on discovery, experimentation, creativity and evaluation. You will develop a greater ability for independent learning and creativity applying Maths and Science skills to problem-solve. The assessment is based upon 2 detailed engineering assignments as well as a 1 hour and 15 minute examination based upon key knowledge and understanding.

What Qualifications Can You Obtain?

The course will lead to a Level 2 Cambridge Nationals in Engineering Design which is the GCSE equivalent at grade 4 to 9. Students who make less than expected progress may, at their teacher's discretion, study for the Cambridge Nationals Level 1 in Engineering Design which is equivalent to 1 GCSE at grades 3-1. The qualification is assessed as Pass, Merit, Distinction or Distinction*.

How Will You Be Assessed?

The Cambridge National is a highly regarded and **recognized** qualification **equivalent to a GCSE 1-9 Grade** where you will be graded from a **Pass to a Distinction***

There are 3 UNITS in total:

R038 Principles of Engineering Design (50%) This is a 1 hour 15 minute written examination based upon knowledge of engineering and the design process.

R039 Communicating Designs (25%) This is the design stage of the course where students will create a range of sketches, design and develop several designs based upon client feedback, analyse feedback and make decisions on which product suits the client needs to develop further and manufacture. You will be required to develop a final design using a wide range of drawing and modelling skills such as isometric drawing, orthographic drawing, planning procedures and CAD Modelling.

R040 Design Evaluation and Modelling (25%) This is the manufacturing stage of the course where you will apply your knowledge of the design process, wood, metal and plastic skills and processes to CREATE a high quality commercial outcome suitable for manufacture.

For further information, please contact your Design and Technology teacher or Mr Temple, Subject Leader for Design & Technology.

GCSE FINE ART

Option

What Will You Do?

The Fine Art course provides the opportunity to create a portfolio of art work that demonstrates a personal response to starting points, briefs and stimuli.

You will enjoy an inspiring, balanced and progressive programme of learning, building your skills, knowledge and understanding of fine art.

You will also build transferable skills which underpin progression into the creative and other industries.

How Will You Do It?

During Year 9 you will revisit knowledge from KS3 and build on these skills to a higher level. You will experiment with new materials and subject matter allowing you to identify your own strengths, weaknesses and interests before starting your coursework. In Years 10 and 11, you will be expected to produce a portfolio of work under controlled assessment conditions.

This portfolio will include research, preparatory and developmental studies and outcome(s) of final pieces, that will be displayed as part of your portfolio of work.

The portfolio must provide evidence that you have met all four assessment objectives. The stimuli used to generate ideas will be based on broad issues, with some quite challenging subject matter. You will be expected to do your own research on the theme and artists linked to the theme to create your own individual and personal response.

What Qualifications Can You Obtain?

You can achieve a GCSE in Fine Art at grades 9-1 in this subject. There is a single tier of entry for this subject.

How Will Your Work Be Assessed?

Your work will be assessed through a set task and one controlled assessment activity.

Controlled Assessment - One portfolio of practical work = 60% of qualification
Set Task - 10 weeks' preparation portfolio and a 10 hour practical exam = 40% of qualification

The Set Task is the final exam which will take place in the spring term of Year 11. This will be given in the form of an exam paper with 5 starting points from which you will have to select one to create a portfolio of work.

The paper will be given to you 10 weeks before the exam in order for you to prepare a portfolio of work to help you develop an idea for your own personal response. The exam is 10 hours long and the final piece created in that time will be marked, along with the exam portfolio, to generate the exam mark.

For further information, please contact your Art Teacher or Miss Ivens, Subject Leader for Fine Art and Photography.

GCSE FOOD PREPARATION AND NUTRITION

Option

Our FPN GCSE aims to build on your existing technical skills so you can produce high skill, high quality outcomes. We teach you about nutrition, cooking methods, where our food comes from, how food products are processed, produced & marketed as well exploring practically, the science behind cooking. FPN is not just “cooking”; it is an invaluable skill that cultivates lifelong learning beyond the classroom.

What Will You Do?

By studying Food Preparation and Nutrition you will:

- Be able to demonstrate effective and safe cooking skills by planning, preparing and cooking a variety of food commodities whilst using different cooking techniques and equipment.
- Develop a knowledge and understanding of the functional properties and chemical characteristics of food, as well as a sound knowledge of the nutritional content of food and drinks.
- Understand the relationship between diet, nutrition and health, including the physiological and psychological effects of poor diet and health.
- Understand the economic, environmental, ethical and socio– cultural influences on food availability, production processes, diet and health choices.
- Demonstrate knowledge and understanding of functional and nutritional properties, sensory qualities and microbiological food safety considerations when preparing, processing, storing, cooking and serving food.
- Understand and explore a range of ingredients and processes from different culinary traditions (traditional British and International) to inspire new ideas or modify existing recipes.

How Will You Do It?

Component 1 will cover principles of food preparation and nutrition by covering:

1. Food commodities
2. Principles of nutrition
3. Diet and good health
4. The science of food
5. Where food comes from
6. Cooking and food preparation

This will be assessed through a written examination at the end of Year 11.

Component 2 will cover food preparation and nutrition in action by covering:

- Assessment 1: The Food Investigation Assessment - a scientific food investigation which will assess your knowledge, skills and understanding in relation to scientific principles underlying the preparation and cooking of food.
- Assessment 2: The Food Preparation Assessment - prepare, cook and present a menu which assesses your knowledge, skills and understanding in relation to the planning, preparation, cooking and presentation of food. These assessments will be based on a choice of tasks released by the awarding body at the start of Year 11.

What Qualifications Can You Obtain?

There is a single tier of entry for this course which leads to a GCSE in Food Preparation and Nutrition at grades 9-1.

How Will Your Work Be Assessed?

Component 1: Written examination– 50%

Component 2: Non– exam assessment (NEA)- 50% (split into two projects; 15% scientific experiment & 35% practical skills based)

For further information, please contact your Design and Technology Teacher; Miss Mackey, Teacher of Food Preparation and Nutrition or Mrs Betteridge, Assistant Subject Leader for Design & Technology.

CAMBRIDGE NATIONALS LEVEL 2 IN HEALTH AND SOCIAL CARE (VOCATIONAL)

Option

What Will You Do?

The Cambridge Nationals in Health and Social Care course will give you the knowledge, understanding and skills needed for a career in the health and social care sector. Through completing a range of assignments, you will explore issues relating to health and well being, human anatomy and development and individuals' rights and needs.

How Will You Do It?

You will study for the Cambridge Nationals Level 2 Certificate in Health and Social Care which consists of three different units:

R032: Principles of Care for Use with Individuals in Care Settings: This unit will help prepare you for a career in any area of health and social care. You will explore the care values that underpin current practice in health and social care and explore ways to promote choice and independence through care. You will also investigate the different forms of communication which may be used in health and social care.

R033: Supporting individuals through life stages: In this unit you will develop a knowledge and understanding of different aspects of human growth and development across the main life stages. You will explore some of the different positive and negative influences which can affect development. This will help you understand and be able to work with people who use health and social care services more effectively. You will research the service providers and practitioners that can support individuals, recommend support and justify how this will meet the needs of a specific individual.

R035: In this unit you will have the opportunity to explore the various public health challenges the country faces, the approaches used to encourage health and wellbeing and the importance of this to society. You will understand the factors affecting a healthy lifestyle so that campaigns can be designed to target different groups of people. You will also learn how to plan and deliver your own small-scale health promotion campaign and how to evaluate your planning and delivery.

What Qualifications Can You Obtain?

Initially all students will study the Cambridge Nationals Level 2 Certificate in Health and Social Care, which is equivalent to 1 GCSE at grades 9-4. Those students who make less than expected progress may, at their teacher's discretion, study for the Cambridge Nationals Level 1 in Health and Social Care which is equivalent to 1 GCSE grades at 3-1. The qualification is assessed as Pass, Merit, Distinction or Distinction*.

How Will Your Work Be Assessed?

This course is mainly assessed by coursework. There is one externally-assessed unit (worth 40% of your final grade). In order to pass each unit you will need to provide evidence of meeting the assessment criteria. This evidence may take the form of posters, essays, reports, records of presentations or role plays.

For further information about this course, please contact Miss Charles, Teacher of Social Sciences and Religion and World Views.

OCR Cambridge Nationals - IT Level 1/2 – J836 (VOCATIONAL)

Option

What Will You Do?

Cambridge Nationals IT will inspire and equip students with the confidence to use skills that are relevant to the IT sector and prepare them for the wider world. It covers the use of IT in the digital world, data manipulation, human-computer interface (HCI) and augmented reality. It will help you understand, apply and use IT effectively to develop practical skills that can be applied to the world of today and tomorrow.

You will need to think creatively, innovatively and analytically to work at developing your independence and confidence. You will do this by planning, designing, creating, testing and evaluating IT solutions and products which are fit for purpose and meet user/client requirements. This includes the integration of newer technologies such as Augmented and Virtual Reality to prepare you for the future.

Information Technology is a vocational course requiring you to complete written coursework to evidence your progress. This can be very challenging to meet deadlines but will give you a real sense of accomplishment and experience to develop your project management skills, which will prove vital in the wider world.

How Will You Do It?

During this course, you will study 3 units; R050- IT in the Digital World, R060- Data Manipulation using spreadsheets, and R070- Using Augmented Reality to present information.

In R050 (exam) you will learn about design and testing concepts for creating an IT solution or product, and the uses of IT in the digital world. The topics include: Design Tools, Human Computer Interface (HCI) in everyday life, Data and Testing, Cyber-security and Legislation, Digital Communications and Internet of Everything (IOE)

In R060 (coursework) you will learn how to plan, design, create, test and evaluate a data manipulation spreadsheet solution to meet client's requirements. The topics include: Planning and Designing the Spreadsheet solution, Creating the Spreadsheet solution, Testing the Spreadsheet solution, Evaluating the Spreadsheet solution

In R070 (coursework) you will learn how to plan, design, create, test and review an Augmented Reality model prototype to meet a client's requirements. The topics include: Augmented Reality (AR), Designing an Augmented Reality model prototype, Creating an Augmented Reality model prototype, Testing and Reviewing

Over the duration of the course you will develop cross curricular skills such as project planning, written communication, project and concept development, working independently and meeting deadlines.

What Qualifications Can You Obtain?

The course will lead to a Level 2 Cambridge Nationals in IT, which is the GCSE equivalent at grade 4 to 9. Students who make less than expected progress may, at their teacher's discretion, study for the Cambridge National Level 1 in Creative IT which is equivalent to 1 GCSE at grades 1 to 3. The qualification is assessed as Pass, Merit, Distinction or Distinction*.

How Will You Be Assessed?

The course is vocational and will be assessed by 2 pieces of coursework (30% each) during the course and 1 exam (40%) at the end of year 11

R050: IT in the digital world

- Written examination: 1hr 30 mins (40%)

R060: Data manipulation using spreadsheets

- Coursework / NEA (30%)

R070: Using Augmented Reality to present information

- Coursework / NEA (30%)

What sort of Careers is it suited for?

Computers and creative solutions are common place in the wider world and Information Technology is ideal to prepare you for this new world. Some typical careers relating directly to Information Technology include:

Website Designer, Cyber Security, Computer Games Designer, Project Management, Social Media Manager and Content Creator

For further information, please contact your Computer Science Teacher or Mr Anstey, Subject Leader for Computer Science and ICT, or Mrs Hiatt-Jones Assistant Subject Leader for Computer Science and ICT.

GCSE MUSIC

Option

What Will You Do?

You will build on work you have already studied in Music in Key Stage 3. You will want to take GCSE Music if you are interested in and enjoy music, if you currently have music lessons or are learning, or want to play an instrument and if you enjoy performing. You will be able to have lessons in almost any instrument, from bass guitar to djembe drum and from violin to voice.

By taking GCSE Music you will become:

- An informed performer
- A skilled composer
- An understanding listener

How Will You Do It?

Lessons will be a mixture of group and individual practical and listening work.

The course is divided into the following three units with common links between all units of the course:

1. Integrated Portfolio (30%): For this controlled assessment you will record performance pieces of music of your choice on your main instrument or your voice, and you will also have to compose a piece of music for the same instrument.
2. Practical Component (30%): For this controlled assessment you will perform pieces of your choice as part of an ensemble (group). You will then have to compose a piece of music using an idea given by the awarding body in Year 11.
3. Listening and Appraising (40%): You will study music covering a range of different styles, some modern and some much older; some from the UK, others from around the world. You will learn how to use musical language to describe, explain and examine the music you hear. We will prepare for this using as much practical work as possible, but be prepared to do a little more written work than at Key Stage 3.

What Qualifications Can You Obtain?

The course is designed to allow you to work at a level you can cope with and to allow you to show your musical talent. There is only one tier of entry for GCSE Music which can lead to grades 9-1.

How Will Your Work Be Assessed?

Your work throughout the course will be assessed by a combination of assessments in school assessed by members of the Music Department and external examination and moderation.

For more information please contact Mrs Davenport, Subject Leader for Music or Mrs Watson, Music teacher.

GCSE PHYSICAL EDUCATION

Option

What Will You Do?

The GCSE PE course is made up of four compulsory components. Two are theory components that are assessed through two examinations and are worth 60% of the final grade. Practical performance in three different sports is also assessed, making up 30% of the final grade. The final 10% is a written analysis and evaluation of a performance task (controlled assessment).

In the theory components you will study the following areas:

Component 1:

- Physical Factors Affecting Performance
- The structure and function of the skeletal system
- The structure and function of the muscular system
- Movement analysis
- The cardiovascular and respiratory system
- Effects of exercise on body systems
- Components of fitness
- Applying the principles of training
- Preventing injury in physical activity and training

Component 2:

- Socio-cultural Issues and Sports Psychology
- Engagement patterns of different social groups in physical activities and sports
- Commercialisation of physical activity and sport
- Ethical and socio-cultural issues in physical activity and sport
- Sports psychology
- Health, fitness and well-being

How Will You Do It?

The course consists of a mixture of practical and theory lessons. Practical lessons will centre around learning theory through physical activity.

What Qualifications Can You Obtain?

Successful completion of the course will lead to a GCSE in Physical Education at grades 9-1. There is a single tier of entry in this subject.

How Will Your Work Be Assessed?

- Two written examination papers– 60% of your final grade.
- Three practically-assessed activities (one team activity, one individual activity and one team or individual activity)– 30% of your final grade.
- One written analysis task (controlled assessment)–10% of your final grade.

There are many practical activities you can be assessed in. These can be done at external clubs, by qualified coaches, as long as video evidence is available. You can also be assessed in school where you will be required to attend extra curricular clubs. Your three best marks from your practical assessments count towards your final grade. In addition to practical performances, you will be assessed in an analysis task. You will have to identify strengths and weaknesses and plan appropriate action to improve your performance in an activity of your choice.

Please note that if you choose PE or Sport as an option, we will advise you as to the most appropriate qualification (GCSE PE or Cambridge Nationals) for you.

For further information, please contact your PE Teacher, Miss Chinn, Subject Leader for PE or Mr Wilson, Assistant Subject Leader for PE.

CAMBRIDGE NATIONALS LEVEL 2 CERTIFICATE IN SPORT SCIENCE (VOCATIONAL)

Option

The Cambridge National in Sports Science is assessed through one exam and two controlled assessment units. The exam is on reducing the risk of sports injuries and dealing with common medical conditions (R180). The two controlled assessment units are on applying the principles of training (R181) and nutrition and sports performance (R183).

In Year 9 and Year 10, pupils will complete units for R181 (30% of overall grade) and R183 (30% of overall grade). Within R181 pupils will complete controlled assessments on the components of fitness, training methods, fitness testing and training principles. Alongside this, they will complete controlled assessment units for R183 on characteristics of a balanced diet, the role of nutrients in sport, dietary requirements and developing a balanced nutrition plan for a selected sport activity.

During Year 11, students will learn the content for their examination based unit (R180 – 40% of overall grade). They will learn about types of sport injuries, injury treatment, extrinsic and intrinsic factors contributing to reducing the risk of injuries and a range of common medical conditions. They will sit the examination based unit during year 11.

What Qualifications Will You Obtain?

The course will lead to a Cambridge Nationals Level 2 Certificate in Sport Science, which is equivalent to 1 GCSE at grades 9-4. It is graded at Pass, Merit, Distinction or Distinction*. Those students who make less than expected progress may be awarded a Level 1 Cambridge Nationals Certificate in Sport Science (which is equivalent to grades 3-1 at GCSE).

Please note that if you choose PE or Sport Science as an option, we will advise you as to the most appropriate qualification (GCSE PE or Cambridge Nationals) for you.

For further information, please contact your PE Teacher, Miss Chinn, Subject Leader for PE or Ms Slater, PE teacher.

GCSE PHOTOGRAPHY

Option

What Will You Do?

This course provides you with the opportunity to create a portfolio of work using digital photography. You will enjoy an inspiring, balanced and progressive programme of learning, building your skills, knowledge and understanding of photography. You will also build transferable skills which underpin progression into the creative and other industries.

How Will You Do It?

During Year 9 we aim to teach you a broad range of skills that will allow you to explore the world through photography. This will be through a series of workshops that investigate compositional, technical and practical photographic techniques.

In Years 10 and 11 you will be expected to create a portfolio of work under controlled assessment conditions. This portfolio should demonstrate that you can respond to different stimuli through exploring imaging techniques such as composition, framing, depth of field, lighting exposure and viewpoint. You will also explore media processes and techniques by abstracting, designing, illustrating and documenting. Your portfolio must provide evidence that you have met all four assessment objectives.

What Qualifications Can You Obtain?

You can achieve a GCSE in Photography (Art and Design) at grades 9-1 in this subject. There is a single tier of entry for this subject.

How Will Your Work Be Assessed?

Your work will be assessed through a set task (examination) and one controlled assessment activity. Controlled Assessment - One portfolio of practical work = 60% of qualification. Set Task – 10 weeks' preparation portfolio and a 10 hour practical exam = 40% of qualification. The Set Task is the final exam which will take place in the spring term of Year 11. This will be given in the form of an exam paper with 5 starting points from which you will have to select one to create a portfolio of work.

The paper will be given to you 10 weeks before the exam in order for you to prepare a portfolio of work to help you develop an idea for your own personal response. The exam is 10 hours long and the final piece created in that time will be marked, along with the exam portfolio to generate the exam mark.

For further information, please contact your Art Teacher or Miss Ivens, Subject Leader for Fine Art and Photography.

GCSE SOCIOLOGY

Option

We are all part of society. Our actions shape society and in turn society influences who we are. Yet how much do we understand about it? This is where Sociology comes in.

What Will You Do?

The role of the sociologist is to try to make sense of the human world. Sociology is the study of people in society and by studying this course you will look at the issues that have contributed to the diverse and exciting world we live in.

How Will You Do It?

GCSE Sociology consists of two topic areas:

Unit 1: The Sociological Approach, Education and Families. In this introductory unit you will explore the role of the sociologist and the methods they use to carry out research. You will then use this knowledge to study the role education and the family structure plays in people's lives. In this unit, you will debate questions such as 'Why do some students fail?' 'Does the education system we have currently work?' and 'Is there an ideal family structure?' 'Is childhood the best time of our lives or toxic?'

Unit 2: Crime and Deviance and Social Stratification. The first part of this unit explores crime in the UK. You will look at how society encourages people to conform and reasons why people commit crimes. Questions that arise as part of this topic are: 'Why do men commit more crimes than women?' 'Is the police force racist or realistic?'. In the second part of this unit you will study how society is structured and the inequalities that exist within society. We will explore issues such as: 'Why are women paid less than men?' and 'Is there such a thing as the Underclass?'

What Qualifications Can You Obtain?

Successful completion of the course will lead to a GCSE in Sociology at grades 9-1. There is a single tier of entry for this subject.

How Will You Be Assessed?

You will be assessed through 2 exams that are each worth 50% of your final grade.

If you would like further information about this course, please contact Miss Charles, Teacher of Social Sciences and Religion and World Views.